

TekRADIUS - RADIUS Server for Windows



TekRADIUS is a RADIUS server for Windows with built-in DHCP server. TekRADIUS is tested on Microsoft Windows, Vista, Windows 7/8/10 and Windows 2008-2022 server.

TekRADIUS complies with RFC 2865 and RFC 2866. TekRADIUS has three editions;

TekRADIUS (Supports Microsoft SQL Server) and TekRADIUS LT (SQLite database) and TekRADIUS OD (Supports MySQL, MariaDB, PostgreSQL and Oracle databases through ODBC). It runs as a Windows Service and comes with a Win32 management interface.

Major Features

- Supports features described in RFC 2865 and RFC 2866 (RADIUS protocol).
- Supports TCP (RFC 6613) and TLS (RFC 6614-RadSec) transports.
- Logs system messages, errors and session information to a log file rotated daily.
- Limits the number of simultaneous sessions for the users.
- Uses Authentication method as a RADIUS check item.
- RADIUS Dictionary can be edited through TekRADIUS Manager GUI.
- Authentication and Accounting ports are user selectable.
- You can create SQL database and tables through TekRADIUS Manager GUI.
- You can map RADIUS accounting attributes to accounting table fields.
- TekRADIUS can be run in Authentication only or Authorization only mode.
- You can define which RADIUS attribute will be used for User-Name substitute.
- You can define your own Authorization query string.
- PAP, CHAP, MS-CHAP v1-v2, EAP-MD5, EAP-TLS, EAP-SIM, EAP-AKA, EAP-MS-CHAP v2, LEAP, PEAP (PEAPv0-EAP-MS-CHAP v2), EAP-TTLS and Digest (draft-sterman-aaa-sip-00.txt) authentication methods are supported.
- TekRADIUS can proxy RADIUS requests to other RADIUS servers.
- TekRADIUS supports IPv6 attributes.
- Generates MS-MPPE Keys for VPN connections.
- Supports OTP (One Time Password) authentication-based RFC 2289.
- Built-in DHCP server.
- You can specify an Expire Date and Time Quota for the users.
- You can authenticate users against Windows Domain or Active Directory.
- Command line utility for adding, deleting and editing users and RADIUS clients.
- Simple reporting interface for browsing accounting records.
- Disconnects users with Packet of Disconnect (Pod) or user defined kill command.
- You can specify how much time user account will be valid after the first logon (Time-Limit) and you can specify allowed logon days and hours (Login-Time).
- Disabling user profile after user configurable number of unsuccessful login attempts.
- You can specify credit limits for daily, weekly or monthly periods.
- Audit log under Windows Event Log / Application and Services Log / TekRADIUS Audit.
- You can run and check the result of an external executable as a check item.
- HTTP user management and reporting interface.
- HTTP REST API for 3rd party integration.
- Quick and easy installation.

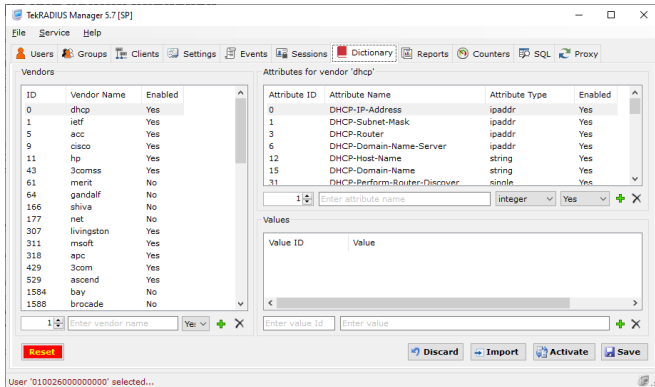
You can use TekRADIUS' built-in DHCP server to assign IP addresses to your wired or wireless devices on your network. Commercial editions of TekRADIUS provide a unique feature; assignment of static IP addresses to wired/wireless clients authenticated using EAP authentication.

Start Date	Start Time	Elapsed Time	Session ID	User Name	NAS IP Address	Framed IP Address	Calling Station	Called Station
23.12.2015	09:22:41	14975:08:37	2610000...	kaplan	192.168...		00-21-5C...	00-1C-2E-6...
23.12.2015	09:22:57	14975:08:21	2620000...	kaplan	192.168...		00-21-5C...	00-1C-2E-6...
07.09.2017	08:31:10	00:00:08	80700006	dwdwley	192.168...	10.5.50.4	8C:29:37:...	hotspot1

TekRADIUS - Active Sessions

TekRADIUS also supports RFC 2868 - RADIUS Attributes for Tunnel Protocol Support and RFC 3079 - Deriving Keys for use

with Microsoft Point-to-Point Encryption (MPPE). You can authenticate and authorize PPTP/L2TP connections using TekRADIUS.



TekRADIUS - RADIUS Dictionary

TekRADIUS provides user level restriction to GUI access. Windows users in the "Administrators" group can access all functions on TekRADIUS Manager GUI but Windows users in built-in "Users" group can access restricted set of functions on TekRADIUS Manager GUI.

Please see TekRADIUS SP Rate Editor Manual for TekRADIUS SP features.

System Requirements

1. A Windows system with 4 GB of RAM.
2. Microsoft.NET Framework 4.8 (Min.)
3. 10 MB of disk space.
4. Administrative privileges.

Supported Standards

- RFC 2131** Dynamic Host Configuration Protocol
- RFC 2246** The TLS Protocol Version 1.0
- RFC 2284** PPP Extensible Authentication Protocol (EAP)
- RFC 2433** Microsoft PPP CHAP Extensions
- RFC 2548** Microsoft Vendor-specific RADIUS Attributes
- RFC 2607** Proxy Chaining and Policy Implementation in Roaming
- RFC 2617** HTTP Authentication: Basic and Digest Access Authentication

- RFC 2622** PPP EAP TLS Authentication Protocol
- RFC 2809** Implementation of L2TP Compulsory Tunneling via RADIUS
- RFC 2865** RADIUS Authentication
- RFC 2866** RADIUS Accounting
- RFC 2867** RADIUS Accounting Modifications for Tunnel Protocol Support
- RFC 2868** RADIUS Attributes for Tunnel Protocol Support
- RFC 2869** RADIUS Extensions
- RFC 3079** Deriving Keys for use with Microsoft Point-to-Point Encryption (MPPE)
- RFC 3162** RADIUS and IPv6
- RFC 3575** IANA Considerations for RADIUS
- RFC 3579** RADIUS (Remote Authentication Dial In User Service) Support for Extensible Authentication Protocol (EAP)
- RFC 3580** IEEE 802.1X Remote Authentication Dial In User Service (RADIUS) Usage Guidelines
- RFC 3748** Extensible Authentication Protocol
- RFC 4187** Extensible Authentication Protocol Method for 3rd Generation Authentication and Key Agreement (EAP-AKA)
- RFC 4187** Extensible Authentication Protocol Method for 3rd Generation Authentication and Key Agreement (EAP-AKA)
- RFC 4284** Identity Selection Hints for the Extensible Authentication Protocol
- RFC 4346** The TLS Protocol Version 1.1
- RFC 4603** Additional Values for the NAS-Port-Type Attribute
- RFC 4818** RADIUS Delegated-IPv6-Prefix Attribute
- RFC 4849** RADIUS Filter Rule Attribute (NAS-Filter-Rule)
- RFC 5090** RADIUS Extension for Digest Authentication
- RFC 5176** Dynamic Authorization Extensions to Remote Authentication Dial In User Service (RADIUS)
- RFC 5281** EAP-TLSv0
- RFC 5246** The TLS Protocol Version 1.2
- RFC 5580** Carrying Location Objects in RADIUS and Diameter
- RFC 5607** Remote Authentication Dial-In User Service (RADIUS) Authorization for Network Access Server (NAS) Management
- RFC 5997** Use of Status-Server Packets in RADIUS Protocol
- RFC 6519** RADIUS Extensions for Dual-Stack Lite
- RFC 6613** RADIUS over TCP
- RFC 6614** Transport Layer Security (TLS) Encryption for RADIUS
- RFC 6911** RADIUS Attributes for IPv6 Access Networks
- RFC 7268** RADIUS Attributes for IEEE 802 Networks
- draft-sterman-aaa-sip-00.txt** RADIUS Extension for Digest Authentication
- draft-kamath-pppext-eap-mschapv2-02.txt** Microsoft EAP CHAP Extensions
- draft-kamath-pppext-peapv0-00.txt** Microsoft PEAP version 0 (As implemented in Windows XP SP1')
- RFC 8446** The Transport Layer Security (TLS) Protocol Version 1.3
- RFC 9190** EAP-TLS 1.3

KaplanSoft Kaplan Bilişim Teknolojileri Yazılım ve Ticaret Ltd.

Büyükdere Cd. 67-71 K:9 Mecidiyeköy, Şişli, 34387, İstanbul

Phone: +90 (212) 356 12 12, E-mail: info@kaplansoft.com / sales@kaplansoft.com